

Impact Report

2023

**Mobal &
MobalPay**



Introduction

In 2023, Mobal & MobalPay poured their heart and soul into making a real difference in Malawi. Teaming up with the Krizevac Project and Seibo, Mobal has put its resources and passion into efforts that go beyond meeting the here and now — they're about building a stronger tomorrow.

This impact report is all about shining a light on Mobal & MobalPay's impact journey over the last year, showing the incredible ways it's touched lives through education, community support, and economic upliftment. From strengthening schools to feeding families and everything in between, Mobal's actions have reached deep, changing thousands of lives for the better.

As we share these stories of hope and transformation made possible by Mobal & MobalPay in 2023, we hope that Mobal & MobalPay have been so much more than just donors; they've been a force for lasting change and a beacon of hope in Malawi.



Education



Education

Every child deserves a fair chance to flourish. This core belief is at the heart of our efforts around the world, and is the reason that we're laying the groundwork needed for children to succeed - education. We've invested heavily in both Early Years and Further Education provision in Malawi, and we've already been able to provide help for tens of thousands of families there. Right now, we're building state-of-the-art educational facilities, from elementary to university level in Chilomoni, so we can continue to support the next generation as they develop.



Key Achievements

Infrastructure Development: The opening of the Mary Queen of Peace Catholic Institute and the completion of a new building for John Paul II Catholic College in Chilomoni.

Academic Excellence: The Carlo Acutis class was recognized for outstanding academic performance, with the Carlo Acutis Catholic High School achieving a 100% pass rate for Form Two students.

Enrollment and Nutrition: Seibo Maria's nutritional support led to a significant reduction in student sickness at Kazengo Primary School, with 95% of targeted learners fed, contributing to increased enrollment and attendance.

Opened

BRAND NEW
EDUCATIONAL
FACILITY

100%

FORM TWO
PASS RATE

95%

TARGETED
LEARNERS FED

Case Study: Transforming Lives Through After-School Programs

Meggie Chisamba's story unfolds as a testament to the transformative power of education, particularly through after-school programs. Meggie, a bright and ambitious student at the Kamuzu College of Health Sciences, attributes her academic success to the foundational skills and confidence gained from participating in after-school sessions.

From an early age, Meggie displayed a keen interest in learning but faced challenges in mathematics and sciences. Recognizing her potential, her parents enrolled her in the after-school sessions offered by her school. These programs provided Meggie with targeted support, allowing her to strengthen her skills in challenging subjects.

Moreover, participating in the debate club honed Meggie's critical thinking and communication skills, significantly boosting her confidence. The subject-focused after-school programs, especially in mathematics, English, and sciences, were instrumental in her academic growth. With the guidance of dedicated tutors and mentors, Meggie gained a deeper understanding of complex concepts and developed effective study strategies.

Now, as a student at the Kamuzu College of Health Sciences, Meggie continues to apply the skills and knowledge she acquired through her participation in after-school programs. Her proficiency in mathematics and sciences has been instrumental in her pursuit of a degree in health sciences, where precision and analytical thinking are paramount.

Meggie's journey from facing academic challenges to excelling in higher education illustrates the critical role of after-school programs in empowering students to achieve their full potential. Her story serves as an inspiring example of how additional academic support can pave the way for success in higher education and beyond.

Food & Community Support



Food & Community Support

Wherever they are in the world, children need to be fed. Our charity partners are making sure that kids get the food they need to not just survive, but thrive. In Malawi, we fund over 18,000 vital school meals for nursery & primary school children every day, plus supply sustainable stoves to families without access to a kitchen. This all helps to ensure that nobody misses out on a good education because of hunger, and everyone has the chance to learn and succeed.



Key Achievements

Welfare Programs: Over 3,901 beneficiaries were supported through various programs, addressing education, health care, and child protection needs.

Nutritional Support: Seibo Maria served over 3.4 million meals to learners, significantly improving health outcomes and educational participation. Additionally, 490 households received take-home rations during the cholera outbreak suspension of school feeding.

3,901

SUPPORTED
BY WELFARE
PROGRAMS

3.4 million

MEALS
SERVED

490

HOUSEHOLDS
SUPPORTED DURING
CHOLERA OUTBREAK

Case Study:

Alice's Journey of Hope and Empowerment

Alice (name changed), a young mother grappling with mental illness, found herself in a dire situation after giving birth. Struggling to cope and isolated, Alice's life was a constant battle against the shadows of her mind. However, her story took a hopeful turn with the intervention of a Family Support Officer (FSO) from the Department of Community Services, who became a beacon of hope in her darkest times.

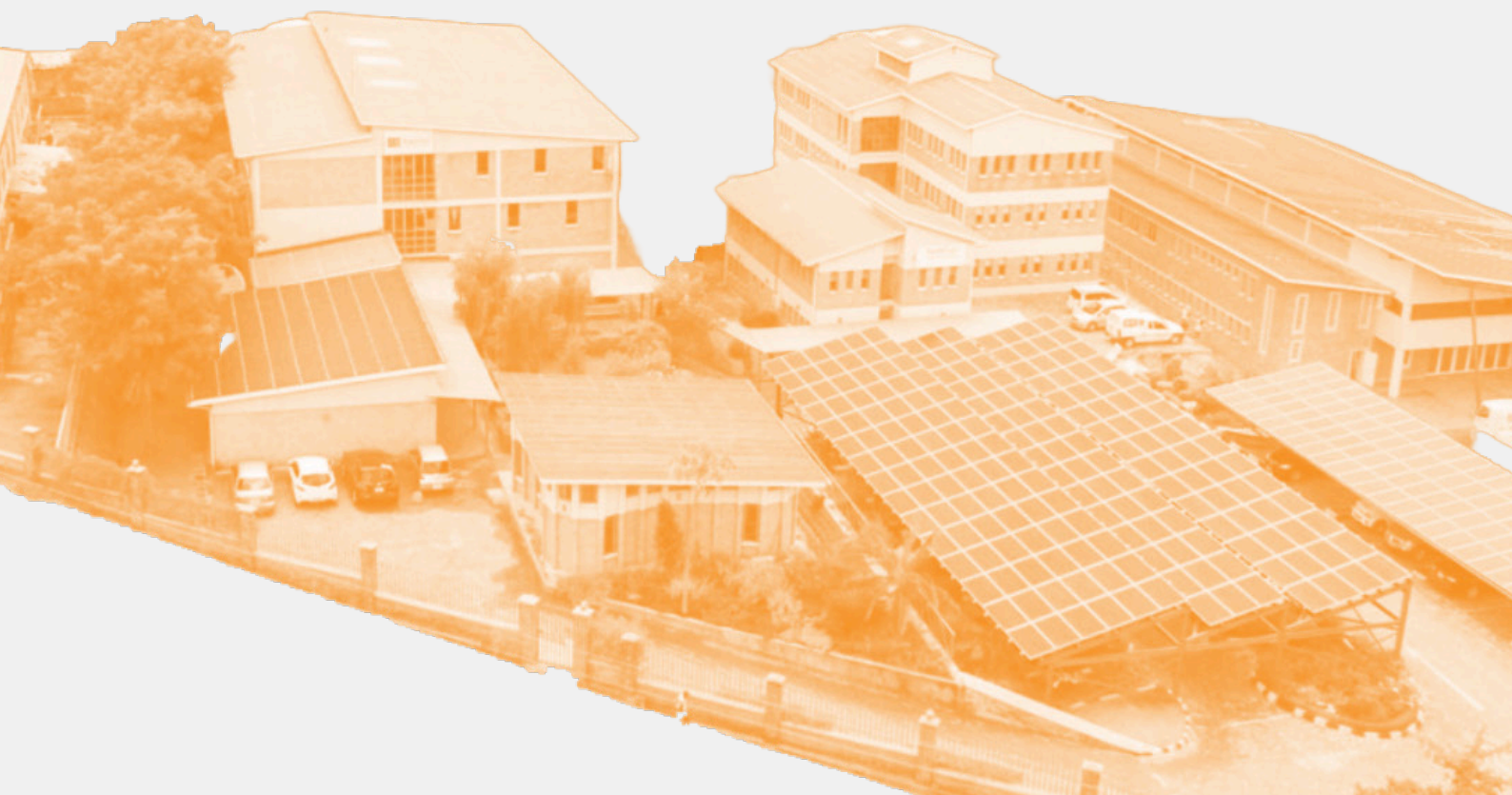
Recognizing the critical importance of early childhood nutrition, the FSO provided Alice's daughter with formula milk and porridge from just three weeks old. This act of kindness ensured the child received the nourishment needed to thrive amidst adversity. As Alice's daughter grew, so did the bond between mother and child, transforming Alice's struggle into a story of resilience and strength.

But Alice's journey didn't end there. With the support of her community and ongoing encouragement from the FSO, Alice embarked on a path of healing and self-discovery. Through counseling and access to provisional food, her mental health gradually improved, giving her the strength to rebuild her life.

Today, Alice stands as a symbol of resilience, with her daughter flourishing in Mother Teresa Nursery School (supported by funds from Mobal) and Alice pursuing her dreams of entrepreneurship. Starting her own business, Alice is now paving a brighter future for herself and her daughter, proving that with community support and unwavering determination, it's possible to overcome the odds and transform lives.

Alice's story is a testament to the power of community support and the resilience of the human spirit, showcasing how dedicated assistance can change the trajectory of lives, bringing hope and new opportunities where there were once none.

Economic Development & Infrastructure



Economic Development & Infrastructure

We believe in lasting change, not temporary solutions. That's why one of our primary aims is to create sustainable jobs in the places that need them. That way, the whole local economy benefits from enterprise and development. We help to create self-sustaining businesses, which plant the seeds of growth that will bring employment and prosperity to entire communities. So far we've created over 7,000 jobs in Malawi, and we're just getting started!

Key Achievements

Expansion of Services: Two organizations that Mobal funds helped set up, Torrent Logistics and Torrent Plant Hire, saw significant growth, adding essential services that contributed to community economic development.

Hygiene and Sanitation: Delivery of hand-wash utensils, soap, and the distribution of pots and stoves to schools in Mzimba promoted improved hygiene practices.

Expansion IN VITAL
SERVICES

Delivery OF HYGIENE
ESSENTIALS



Case Study:

Flora's Path to Fashion Entrepreneurship

In the heart of Malawi, Flora Msiska and her friends embarked on a transformative journey from aspiring fashion designers to successful entrepreneurs, leveraging their skills and creativity to make an indelible mark on the local fashion industry. After completing a rigorous three-year Diploma Tailoring Program at the Mobal-supported St. John Paul II College, where they honed their craft under the tutelage of experienced instructors, they faced the daunting challenge of carving a niche for themselves in Malawi's competitive fashion scene.

Undaunted by the obstacles, Flora and her colleagues pooled their resources and founded a fashion design shop. Their workshop became a hub of innovation, blending traditional craftsmanship with modern design principles. Flora, in particular, distinguished herself with her bold patterns and inventive silhouettes, captivating a growing clientele and setting new trends in the process.

The group's venture quickly gained recognition for its exceptional quality and unique designs, establishing a loyal customer base. Flora's success story transcended her personal achievements, inspiring a new generation of designers to pursue their creative ambitions. Beyond their individual accomplishments, their enterprise contributed significantly to local economic development by creating employment opportunities and fostering a vibrant community of artisans and designers.

Flora's journey, from a student with a dream to a fashion industry trailblazer, exemplifies the power of education, collaboration, and entrepreneurship. It highlights the potential for economic empowerment and innovation in the fashion industry, proving that with passion, perseverance, and support, aspiring designers can achieve great success and drive positive change in their communities.

2023 at a Glance



In 2023

3,901

SUPPORTED
BY WELFARE
PROGRAMS

95%

TARGETED LEARNERS FED

490

HOUSEHOLDS
SUPPORTED DURING
CHOLERA OUTBREAK

Aid

FOR FAMILIES
AFFECTED BY
CYCLONE FREDDY

1

NEW BUILDING FOR
JOHN PAUL II CATHOLIC
COLLEGE

100%

PASS RATE IN
TERM 3 EXAMS

0%

REDUCTION IN STUDENT
SICKNESS TO ZERO AT
KAZENGO PRIMARY SCHOOL

Support

FOR FAMILIES
INCLUDING
FOOD, EDUCATION &
ENTREPRENEURSHIP

Expansion

OF KEY
LOCAL
BUSINESSES

Over £3,000,000

DONATED BY MOBELL GROUP IN 2023

2024 Vision

Much of Mobal's profits from last year will be used in 2024 to build student hostels to enable girls from among the rural poor to access the high school we opened in 2021.

We'll also be growing the number of teachers' houses in response to rapid urbanisation and population growth that's pushing rental prices beyond reach and causing staff to leave.

The degradation of the Malawi economy is having a huge shock effect, with food inflation approaching 30% and a single-day 44% devaluation in the Malawi Kwacha last year, against a general downward trend.

Building future resilience against this, we intend to secure a sizeable farm and machinery to grow food for Seibo and our schools. The machinery will also broaden the Torrent rental fleet to extend the existing offering from a construction and logistics focus to include a new agricultural portfolio.

We hope also to get into agri-processing this year, making our own *Likuni Phala* children's porridge as well as laying the ground for cash crop processing of some sort in the future.

Thank You

As we close this Impact Report, we are filled with gratitude towards you, our Mobal and MobalPay customers, whose support has made all the good work documented here possible. You are the driving force behind every achievement—from enhancing educational opportunities to improving health and nutrition in Malawi.

Each success story and progress metric in this report underscores the powerful impact of your engagement with Mobal and MobalPay. Looking ahead to 2024, we are excited to continue this journey with you, expanding our efforts and deepening our impact.

Thank you for being part of this. Together, we are not just envisioning a better future; we are actively creating it.
